

Performance Analysis of a Control Scheme for Shunt Active Filter as Reactive Power Compensator

Dr. Lakshman Naik P¹, Mr. K. Naresh², Mr. G Nagaraju³, Mr. P. Siva Sankar⁴

¹Associate Professor, Electrictrical and Electronics Engineering, VVIT, Nambur, India, ¹lakshman.help1@gmail.com

²Assistant Professor, Electrictrical and Electronics Engineering, URCET, Vijayawada, India, naresh5kelothu@gmail.

³Assistant Professor, Electrictrical and Electronics Engineering, URCET, Vijayawada, India, nagarajuget@gmail.com

⁴Assistant Professor, Electrictrical and Electronics Engineering, KLEF, Vaddeswaram, India, sivasankarp@kluniversity.in

Corresponding Author: Dr. Lakshman Naik P¹

ABSTRACT

This article demonstrates the performance analysis of a simple control strategy for three-phase voltage source converter (VSC) based Active Filter as reactive power compensator in grid integrated system for enrichment of power quality. Almost all the electrical system consist power electronic based reactive loads which may produce the power quality issues such as current harmonics, undesired power factor, reactive power burden and etc. in the distribution system. The reactive power demand is one of the severe power quality issues, so that the power researchers are concentrating to keep it at desired level. This article represents an operation of P-Q Control Strategy for generation of gate signals, which activates the operation of shunt connected active filter for diminution of current harmonics in the projected system. The mentioned control method is modeled and simulated in Simulink environment for effectiveness of the study.

Index Terms – Voltage Source Converter (VSC), Reactive Power, Current harmonics, Active Power, Power Factor, Power Quality, Reactive power management, Active Filter.

NOMENCLATURE

V_{abc}	Main grid source voltage
I_{abc}	Main grid source current
VSC	Voltage source converter
VLL	PCC line-line voltage
PCC	Point of common coupling
SAF	Shunt connected Active Filter
Vdc	DC capacitor voltage
i_{La}, i_{Lb}, i_{Lc}	Phase-a,b,c load Currents
\bar{q}	average reactive power, VAR
\tilde{q}	Oscillatory reactive power, VAR
i_{sabc}^*	Reference currents for Statcom
i_{α}, i_{β}	Currents in $\alpha\beta$ -coordinates

1.0 INTRODUCTION

Due to increased utilization of power electronic loads like uninterrupted power suppliers, electric arc furnaces, Adjustable Speed Drives (ASD) and etc. has resulted severe power issues in the projected system. The non-linear loads effects on the system's performance and efficiency by injecting the harmonics into the system. the IEEE 519-1992 describes the harmonic limitations in the distribution system [4]. The major consequences of current harmonics are excessive neutral current, Transformer overheating, Distortion of feeder voltage, Malfunction of sensitive equipment like energy meter and computers, poor power factor and etc. [1]. Because of reactive components the distribution system absorbs the reactive power (Q), which enhances the VAR demand in power distribution system, which effects on power factor; hence the compensation of reactive power is the main task for researchers to obtain efficient and effective outcomes from the projected system.

The custom power devices are playing vital role for the diminution of quality issues in distribution system. Among the various FACTS devices the shunt active filters are responsible one for mitigation of both reactive demand and current harmonics. The control strategy called instantaneous reactive power strategy and also known as P-Q Theory, generating the required gate signals, which activates the operation of VSC (Voltage Source Converter) based shunt connected filter for diminution of quality issues in grid tie projected test system.

This article managed as follows, the section II demonstrates need for reactive power compensation, section III depicts about description of proposed system and IV, V and VI sections demonstrates control strategy, result analysis and conclusion respectively.

2.0 NECESSITY OF REACTIVE POWER COMPENSATION

The main grid source will generate the required amount of reactive power for proper operation of electric equipment. The generated VAR power will be stored in system's reactor or in a capacitor during quarter of a cycle. During forthcoming quarter of a cycle it will be feedback to the grid source. Hence the reactive power is circulating between the reactor and main grid source. To overcome this particular circulation of VAR power issue from reactor to source, the compensation strategies are required in the power system. On the other hand the control or compensation of reactive power in the test model results improvement of the power quality such as

- Proper voltage control or Voltage regulation
- Power Factor enrichment
- Diminution of current harmonics
- Load balancing in the projected system

In this research work the control or compensation of reactive power can be implemented with the help of active involvement of mentioned control strategy for Active Filter for magnification of power quality in grid tie projected system.

3.0 PROPOSED SYSTEM DESCRIPTION

The Fig.1 indicates the detailed description of the test model. The performance analysis of proposed control strategy is analyzed for proposed grid tie system for enrichment of power quality.

$$i_{La} = \sum I_{Lan} \sin\{n(\omega t) - \theta_{an}\} \quad (4)$$

$$i_{Lb} = \sum I_{Lbn} \sin\left\{n\left(\omega t - \frac{2\pi}{3}\right) - \theta_{bn}\right\} \quad (5)$$

$$i_{Lc} = \sum I_{Lcn} \sin\left\{n\left(\omega t - \frac{4\pi}{3}\right) - \theta_{cn}\right\} \quad (6)$$

As per Clarke's transformation ($abc \rightarrow \alpha\beta 0$) the grid voltages and currents in the stationary frame will be represented as follows

$$\begin{bmatrix} V_\alpha \\ V_\beta \end{bmatrix} = \sqrt{\frac{2}{3}} \begin{bmatrix} 1 & -1/2 & -1/2 \\ 0 & \sqrt{3}/2 & -\sqrt{3}/2 \end{bmatrix} \begin{bmatrix} V_a \\ V_b \\ V_c \end{bmatrix} \quad (7)$$

$$\begin{bmatrix} i_\alpha \\ i_\beta \end{bmatrix} = \sqrt{\frac{2}{3}} \begin{bmatrix} 1 & -1/2 & -1/2 \\ 0 & \sqrt{3}/2 & -\sqrt{3}/2 \end{bmatrix} \begin{bmatrix} i_{La} \\ i_{Lb} \\ i_{Lc} \end{bmatrix} \quad (8)$$

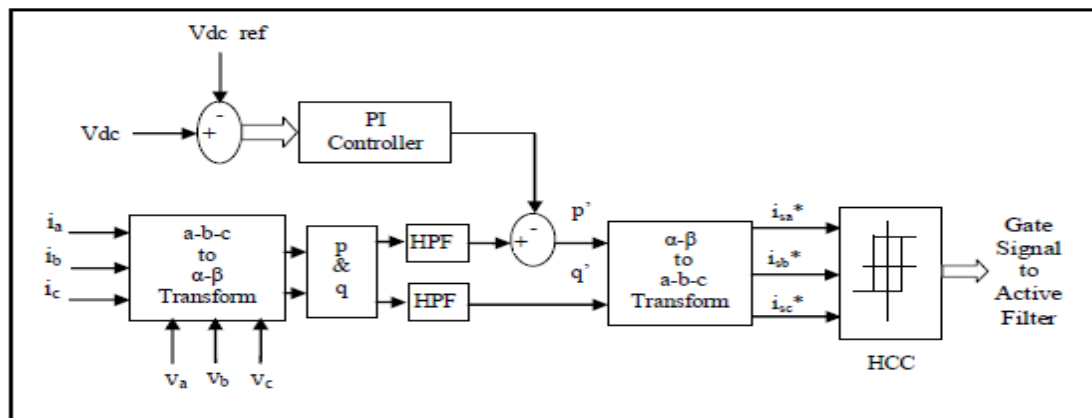


Fig. 3 Schematic diagram of p-q control scheme.

The various powers are computed as follows

$$p = v_\alpha i_\alpha + v_\beta i_\beta \quad (9)$$

$$q = -v_\beta i_\alpha + v_\alpha i_\beta \quad (10)$$

$$\begin{bmatrix} p \\ q \end{bmatrix} = \begin{bmatrix} v_\alpha & v_\beta \\ -v_\beta & v_\alpha \end{bmatrix} \begin{bmatrix} i_\alpha \\ i_\beta \end{bmatrix} \quad (11)$$

The i_α and i_β can be obtained as follows

$$\begin{bmatrix} i_\alpha \\ i_\beta \end{bmatrix} = \frac{1}{\Delta} \begin{bmatrix} v_\alpha & -v_\beta \\ v_\beta & v_\alpha \end{bmatrix} \begin{bmatrix} p \\ q \end{bmatrix} \quad (12)$$

Where $\Delta = v_\alpha^2 + v_\beta^2$

$$p = \bar{p} + \tilde{p} \quad (13)$$

$$q = \bar{q} + \tilde{q} \quad (14)$$

Where \bar{p} is average active power and \bar{q} is average reactive power and \tilde{p} , \tilde{q} are oscillatory powers. The gate currents in the stationary reference frame will be calculated with the assistance of inverse Clarke's technique as follows

$$\begin{bmatrix} i_{sa}^* \\ i_{sb}^* \\ i_{sc}^* \end{bmatrix} = \sqrt{\frac{2}{3}} \begin{bmatrix} 1/\sqrt{2} & 1 & 0 \\ 1/\sqrt{2} & -1/2 & \sqrt{3}/2 \\ 1/\sqrt{2} & -1/2 & -\sqrt{3}/2 \end{bmatrix} \begin{bmatrix} i_0^* \\ i_{s\alpha}^* \\ i_{s\beta}^* \end{bmatrix} \quad (15)$$

5.0 RESULT ANALYSIS

The power electronics based nonlinear inductive loads are connected at point of common coupling (PCC) and supplied by main grid source.

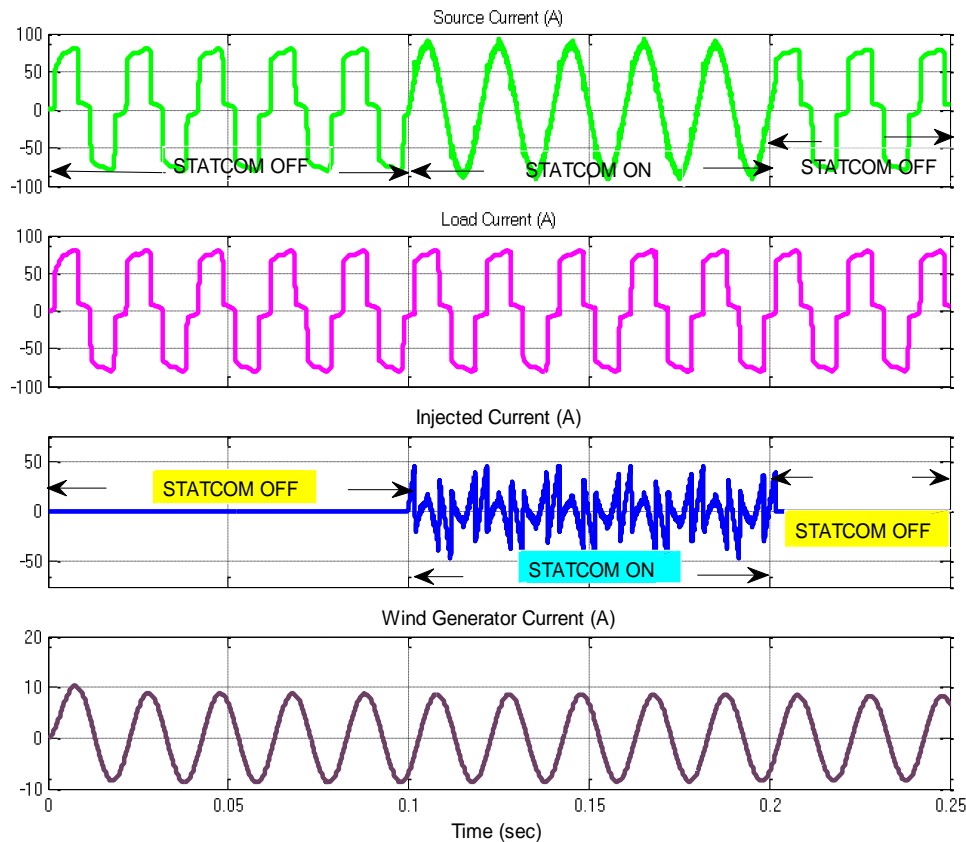


Fig.4 (a)Source current (b)Load current (c) Active Filter injected current (d)Wind Generator current

The distorting loads always drawing harmonic currents from main source, which results in the distortion of supply current at Point of Common Coupling. The distorted current value always depends on main grid source impedance. In this MATLAB simulation model the diode bridge rectifier is connected in Delta configuration as presented in the Fig.1. The Simulation waves for the projected test system demonstrate the performance of proposed control strategy for SAPF as volt ampere reactive power compensator for attenuation of power quality concerns in the system.

From Fig.4(a) it is clear that before 0.1s (Active Filter OFF mode) the source current is get polluted with harmonic currents generated by non-linear load. The SAPF is injecting the required amount of current with desired phase and magnitude so that the current harmonics are completely mitigated from source current from 0.1s to 0.2s, because in this time period the Shunt Active Filter is allowed to operate as presented in fig.4(c).

The Fig.5 represents the reactive power management with Active Filter as reactive power compensator. It is clear that in the time span before 0.1s and after 0.2s (Active Filter OFF mode) the volt ampere reactive power demand is more in the system and it is completely compensated by shunt active filter

from 0.1s to 0.2s (Active filter ON mode) with the help of active operation of SAPF in proposed grid integrated system.

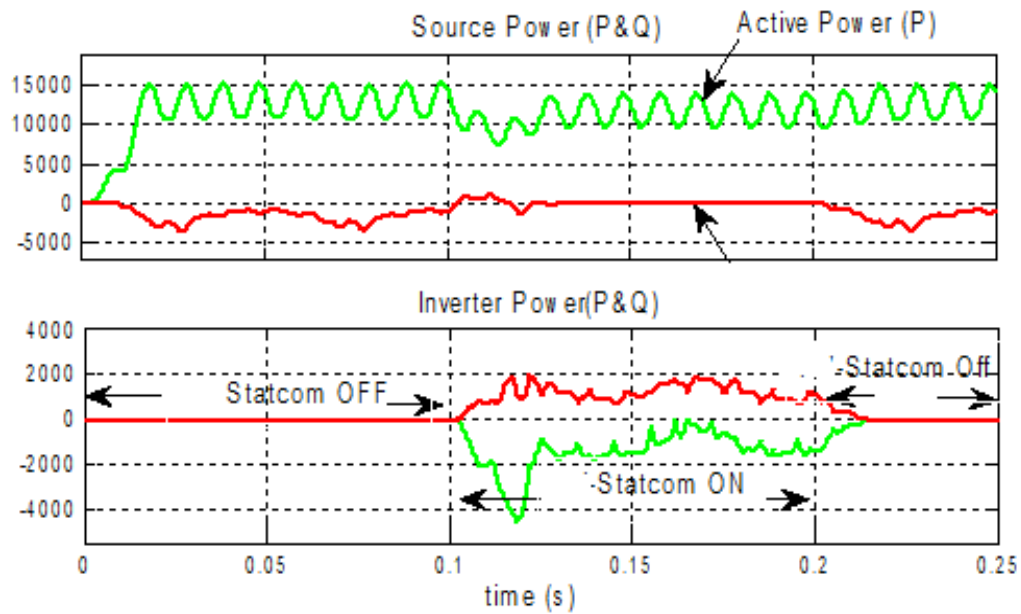


Fig.5 (a)Source Power (b) Active Filter injected Power

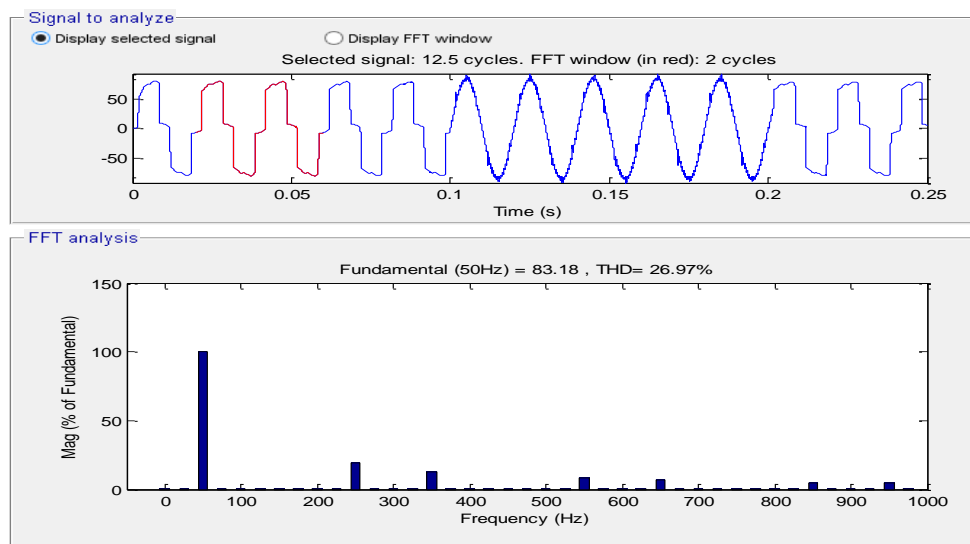


Fig.6 Source Current FFT analysis without SAPF.

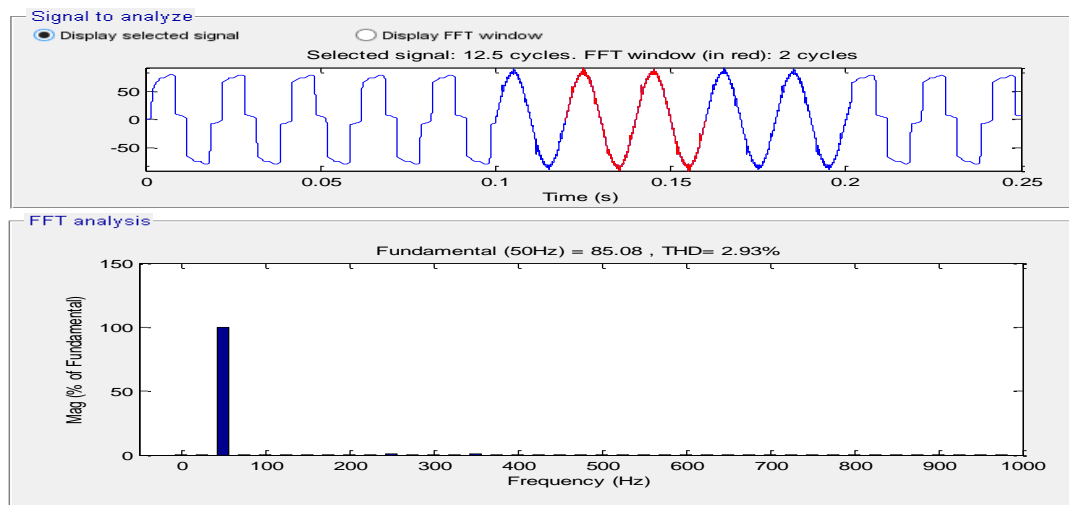


Fig.7 Source Current FFT analysis with SAPF.

The Fig.6 indicates the FFT analysis of source current without Shunt active filter and Fig.7 indicates the FFT analysis of source current with shunt active filter. From Fig.6 and Fig.7 it is clear that the THD value is reduced from 26.97% to 2.92%, which is within the acceptable limit of IEEE standard.

6.0 CONCLUSION

The performance analysis of A control strategy called instantaneous reactive power theory for voltage source converter based Shunt Active Power Filter reactive power compensator was presented and analyzed with the help of active operation of SAPF the volt ampere reactive power is compensated and current harmonics are completely mitigated and power factor is improved from lagging mode two leading case. The reactive power compensation and current harmonic mitigations results are simulated using MATLAB simulink block set. The THD value of source current was found within the accepted limit of IEEE standard value.

REFERENCES

1. Rajiv K. Varma, Vinod Khadkikar, and Ravi Seethapathy Power Engineering Letters---“Nighttime Application of PV Solar Farm as STATCOM to Regulate Grid Voltage”, IEEE transactions on energy conversion, vol. 24, no. 4, december 2009.
2. M. I. Milands, E. R. Cadavai, and F. B. Gonzalez, “Comparison of control strategies for shunt active power filters in three phase four wire system,” IEEE Trans. Power Electron., vol. 22, no. 1, pp. 236, Jan. 2007.
3. C. Han, A. Q. Huang, M. Baran, S. Bhattacharya, and W. Litzemberger, “STATCOM impact study on the integration of a large wind farm into a weak loop power system,” IEEE Trans. Energy Conv., vol. 23, no. 1, pp. 226–232, Mar. 2008.
4. D. Patel, R. K. Varma, and R. Seethapathy, “Impact assessment of distribution generation on medium voltage distribution systems of Hydro One Networks Inc.,” presented at the CIGRE Canada Conf. Power Syst., Winnipeg, MB, Canada, Oct. 19–21, 2008, pp. 1–7, Paper 544.
5. Chong Han, Member, IEEE, Alex Q. Huang, Fellow, IEEE, Mesut E. Baran, Member, IEEE “STATCOM Impact Study on the Integration of a Large Wind Farm into a Weak Loop Power System”, IEEE TRANSACTIONS ON ENERGY CONVERSION, VOL. 23, NO. 1, MARCH 2008.

6. Rajiv K. Varma, Senior Member, IEEE, Shah Arifur Rahman, Member, IEEE and Ravi Seethapathy, Senior Member, IEEE. “Novel Control of Grid Connected Photovoltaic (PV) Solar Farm for Improving Transient Stability and Transmission Limits Both During Night and Day.
7. S. Heier, “Grid Integration of Wind Energy Conversions.” Hoboken, NJ: Wiley, 2007, pp. 256–259.
8. Rajive. K.Varma Senior Member IEEE, Shriram, S.Rangarajan “Novel Application of a PV Solar plant as STATCOM during Night and Day in a Distribution Utility network”. -Conf.IEEE-2011.
9. Sreejith.S, Upama Bose, K. Muni Divya Sree Vachana, Vallathur Jyothi “Application of D-STATCOM as Load Compensator for Power Factor Correction”, 2014 International Conference on Control, Instrumentation, Communication and Computational Technologies (ICCICCT)-2014.
10. G.pyo, H.Kang and S.Moon, ”A New Operation Method for Grid-connected PV System considering Voltage Regulation in Distribution System”. in Conf.proc.IEEE PES GM 20-24 july 2008, pp-1-7.
11. Sanhueza, Sérgio M.R.; Vaz, Alexandre R., “Photovoltaic solar system connected to the electric power grid operating as active power generator and reactive power compensator,” Solar Energy, v 84, n 7, p 1310- 1317, July 2010.
12. Shriram. S. Rangarajan , Sreejith.S , Siddhartha Nigam “Effect of Distributed Generation on Line Losses and Network “.School of Electrical Engineering, Vellore Institute of Technology.
13. RajivK.Varma, Senior Member, IEEE, Shah Arifur Rahman, Member, IEEE, and Tim Vanderheide, Member, IEEE. “New Control of PV Solar Farm as STATCOM (PV-STATCOM) for Increasing Grid Power Transmission Limits During Night and Day” IEEE transactions on power delivery, vol.30, no.2, april 2015.
14. Rajiv. K. Varma, Senior Member IEEE, Ehsan M. Siavashi, Byomakesh Das, and Vinay Sharma, Member IEEE “Real-Time Digital Simulation of a PV Solar System as STATCOM (PV-STATCOM) for Voltage Regulation and Power Factor Correction”.. 2012 IEEE Electrical Power and Energy Conference.
15. IEEE 100, The Authoritative Dictionary of IEEE Standard Terms, Seventh Edition, 2000, p. 234.i
16. IEEE recommended practices and requirements for harmonic control in electrical power systems, IEEE Standard 519-1992, New York/USA, IEEE, 1992.
17. IEEE P1547 Standard for distributed Resources interconnected with electric power systems, IEEE P1547 std. Sep.2002.
18. R. Nagaraja, “An insight into reactive power”, Power Research and Development Consultants Newsletter, Vol. 4, Issue 3 & 4, Jul.-Dec. 2014, pp. 4-9.
19. Reactive Power Control in Electric Systems T.J.E. Miller.
20. Shekhar M. Kelapure, “Reactive power management – an overview”, Power Research and Development Consultants Newsletter, Vol. 4, Issue 3 & 4, Jul.-Dec. 2014, pp. 14-15.
21. Rakesha H.S. and K. Balaraman, “Reactive power market in select countries”, Power Research and Development Consultants Newsletter, Vol. 4, Issue 3 & 4, Jul.-Dec. 2014, pp. 16-18.
22. Rogar c dugan “Electrical Power Systems Quality, surya santosa” markF.mc granaghana, surya santoso.IEEE, taransactions.

- 23..N. Hingorani and L. Gyugyi, Understanding FACTS— Concepts and Technology of Flexible AC Transmission Systems. Piscataway, NJ: IEEE Press/Wiley, 2000.
- 24.Bhim Singh and Sabha Raj Arya, “Design and control of a DSTATCOM for power quality improvement using cross-correlation function approach”, Int. Journal of Engineering Science and Technology, Vol. 4, No.1, 2012, pp. 74-86.
- 25.Sharad w. mohod, member, IEEE, and mohan v. aware “A statcom-control scheme for grid connected wind energy system for power quality improvement .” IEEE systems journal, vol. 4, no. 3, SEPTEMBER 2010.
- 26.C. Schauder and H. Mehta, “Vector analysis and control of advanced static VAR compensators”, Proc. Inst. Electr. Eng. Generation, Transmission, Distribution, Vol. 140, No. 4, Jul. 1993, pp. 299–306.
- 27.K. Eichert, T. Mangold, M. Weinhold, “PowerQuality Issues and their Solution”, in VII Seminario de Electrónica de Potencia Valparaíso, Chile, Abril 1999.